

[View online](#)

[Booking request](#)

EDEN



ESPERIDA , MYKONOS

OVERLOOKING THE AEGEAN SEA

Owing its name to the inspiring views the property offers, Esperida is a remarkable private villa located in Aleomandra. The house faces west granting panoramic sea views over Delos and Rhenia islands, also ideally close to Chora and the nearby beaches of Agios Ioannis and Ornos.

Esperida's pool terrace surrounds the front of the property, generous in space and provides both sunbathing options as well as a shaded outdoor dining solutions. The infinity pool shows two wooden landings built on opposite sides of the thirteen-meter long swimming pool.

The style of the interior is quite minimal throughout although very sophisticated. The airy living room displays many sitting options with interesting artifacts around as well as sea views and pool terrace access through French doors. The kitchen was designed in a discrete position on the side of the living room and features Miele appliances. All bedrooms are bright, elegant with stunning sea views and all have the required amenities. A fresh atmosphere and unforgettable views are key ingredients to the full appreciation of Esperida for guests who seek an idyllic setting within brief distance from the vibrant Chora of Mykonos.

LAYOUT

MAIN HOUSE: 8 GUESTS

Upper Level

1 Master Bedroom with double bed, A/C, en-suite bathroom with shower, sea view

1 Guest Bedroom with double bed, A/C, en-suite bathroom with shower, sea view

Lower Level

2 Guest Bedrooms with double beds, en-suite bathrooms with shower, lateral sea view

POOL STUDIO: 2 GUESTS

1 Guest Bedroom with double bed, en-suite bathroom with shower, separate independent access from pool area

FACTS

Prices from: upon request

Sleeps: 5 - 10 Guests

5 bedrooms

SERVICES INCLUDED

4 hours daily maid service, change of bath & pool towels daily,

linen twice weekly Complimentary Concierge Assistance before

your arrival and during your entire stay at the property | Complimentary escort & assistance with luggage to / from the

property, both at arrival and departure | Complimentary assistance for check-in / out procedures at the property

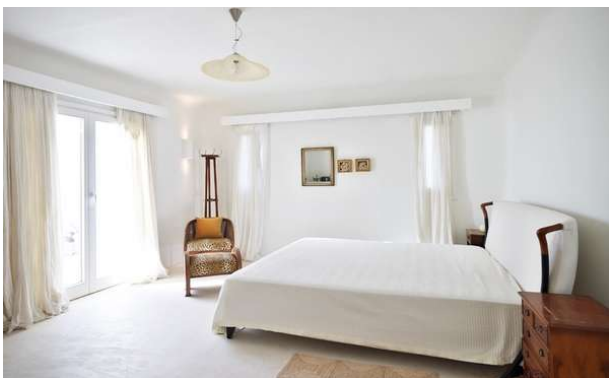
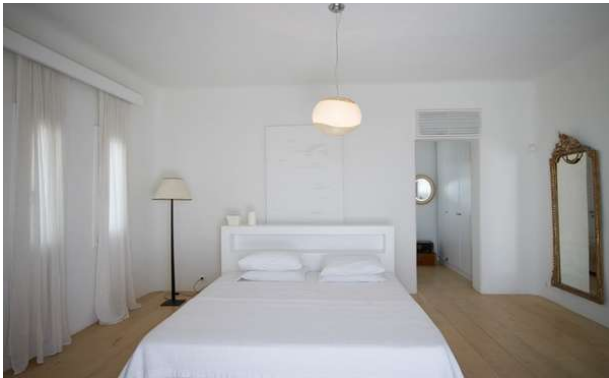
DISTANCES

Airport: Mykonos Airport, 4.5 Metres

Town: 5.5 Metres

PROPERTY FEATURES

ESPERIDA , MYKONOS



ESPERIDA , MYKONOS



ESPERIDA , MYKONOS



ESPERIDA , MYKONOS

