

[View online](#)

[Booking request](#)

EDEN



BEECHTREE , PAROS

VILLA BEECHTREE

A private road surrounded by typical Mediterranean vegetation leads to this magnificent beachfront property called Beechtree, a large villa in the Maganies area, characterized by a Cycladic architecture made of square shapes and white walls, which stand out in a fascinating landscape amidst the surrounding environment.

The villa is divided into two independent units joined by a pergola, which provides a pleasant shaded area for outdoor dining. The property's entrance leads to an airy open space incorporating the large living room, the indoor dining room and the fully equipped kitchen. The atmosphere is informal, but pervaded by an obvious attention to every detail that gives a quaint sophistication to the decor, especially for the use of warm pastel colors and olive tones combined in an intriguing fashion with the terracotta flooring.

An internal staircase leads to the pool level where there are three bedrooms, including a generous master bedroom, each with its own bathroom boasting the typical traits of the traditional cimentogonia. Two of the guest bedrooms have sea views and a private entrance from outside, while the third is smaller and positioned on the back. The detached unit contains four bedrooms similar to each other; each characterized by the same taste featured throughout the property, simple and informal, each with en-suite bathroom, sea views and private entrance from outside.

Beechtree is an exceptional property, with a traditional taste that doesn't compromise modern comforts, in an ideal position, facing the sea with access to a small pebble beach and near to Antiparos and the famous beach of Soros.

FACTS

Prices from: upon request
Sleeps: 6 - 12 Guests
7 bedrooms

SERVICES INCLUDED

HOUSEKEEPING

2 hours daily maid service, change of linen & towels twice weekly

BEECHTREE , PAROS

LAYOUT

Entrance Level

1 Master Bedroom with double bed, A/C, en-suite bathroom with shower, ceiling fan, TV, direct access to shared balcony, sea view

1 Guest Bedrooms with double bed, A/C, en-suite bathroom with shower, ceiling fan, TV, direct access to shared balcony, sea view

1 Guest Bedroom with double bed, A/C, separate bathroom with shower, ceiling fan, located on the rear with no view

Upper Level

2 Guest Bedrooms with double beds, A/C, en-suite bathrooms with shower, ceiling fan, TV, both with direct access to shared balcony, sea view

Entrance Level

2 Guest Bedrooms with double beds, A/C, en-suite bathrooms with shower, ceiling fan, TV, both with direct access to pool area, sea view

DISTANCES

PROPERTY FEATURES

SWIMMING POOL Waterfront private infinity pool

OUTDOOR AMENITIES Shaded outdoor dining area, shared BBQ, shared tennis & basketball court

AIR CONDITIONING All bedrooms

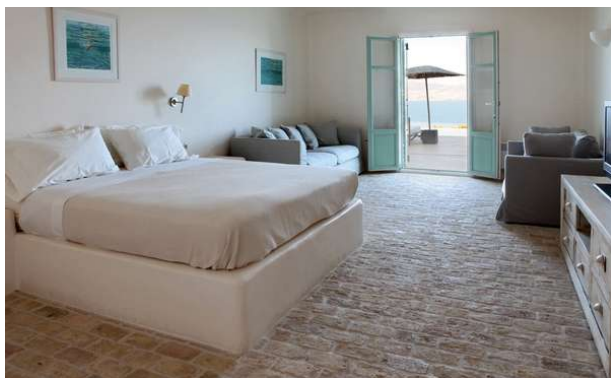
KITCHEN Well equipped with modern appliances

TECH SPECS Wi-Fi, TV, SAT, DVD, Hi-Fi

BEECHTREE , PAROS



BEECHTREE , PAROS



BEECHTREE , PAROS

