

[View online](#)

[Booking request](#)

EDEN



APARTMENT GRIZZLY IO3 , VAL D ISERE

EXCEPTIONAL LOCATION

Ideally located 450 meters from the village of Val d'Isère, This apartment offers ski-to-door access, the residence offers a exceptionally quiet environment while preserving a prime location and magnificent views.

LAYOUT

Villa Surface: 78

Entrance
Living room with flat screen, fire place and open kitchen
1 balcony accessible from living room and 2 bedrooms
Independent WC

Bedroom 1: Double bed 180x200cm with ensuite 1 bathroom with WC
Bedroom 2: Double bed 160x200cm or twin beds 2x80cm with ensuite shower room
Bedroom 3: Bunk beds 90x200cm with ensuite shower room

FACTS

Prices from: upon request
Sleeps: 3 - 6 Guests
3 bedrooms

SERVICES INCLUDED

7 nights luxury accommodation
Welcome at the apartment
Gourmet welcome basket
Firewood
Toiletry products in each bathroom
Linens (towels and sheets)
Bathrobe
Middle of stay cleaning
End of stay cleaning

DISTANCES

Airport: Geneva
Town: 450 Metres
Slopes: 100 Metres

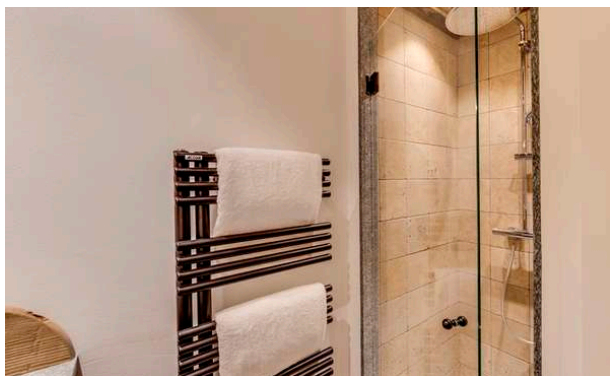
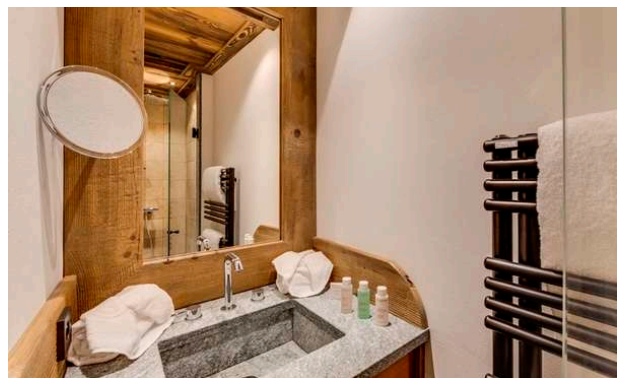
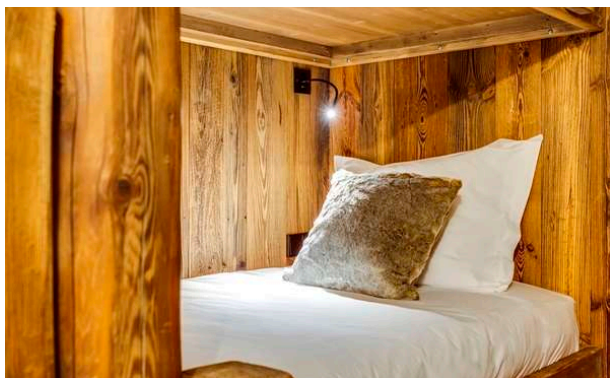
PROPERTY FEATURES

TV
Wi-Fi
Parking (1)
Boot heaters
Fireplace
Ski locker

APARTMENT GRIZZLY IO3 , VAL D ISERE



APARTMENT GRIZZLY 103 , VAL D ISERE



APARTMENT GRIZZLY IO3 , VAL D ISERE

