

[View online](#)

[Booking request](#)

EDEN



CHALET-SHAR-PEI , VAL D ISERE

BATHED IN SUN

New fabulous addition to our program for winter 2020/21, Shar-Pei must have one of the best locations in Val d'Isère. This elegant, self-catering chalet sits right on the snow front and overlooks the Calabourdanne River. The chalet is spread over four levels and offers stunning views from the huge south-facing terrace. Equally perfect for families who wish to combine a little extra luxury with the possibility of hitting the lifts in the morning; or friends looking for a cool alpine retreat in a perfect location. The chalet also has its own 6mx3m swimming pool and a hammam. Chalet Shar-Pei does not compromise on location with a ski-in and ski-out position and a luxury chauffeur service that is offered until 8 p.m.

Shar-Pei is all about the spectacular light entering through the south-facing windows on the top floor. Huge reclaimed wood beams and a wraparound deck really give the feeling of space and the design draws the surrounding mountains into the chalet. The natural stone and wood floors harmonize with the brutality of the surrounding mountains, and the soft, comfortable linens and natural wools combine beautifully with bespoke industrial pieces that have been built and designed especially for the property. a family cherry farm near Paris.

LAYOUT

The chalet has four floors. The main entrance of the chalet, facing west, leads directly to the cloakroom and the ski room. All the rooms in the chalet have a private bathroom and reclaimed wood and natural Vanoise stone floors. On the ground floor, you will find two bedrooms, with the possibility of double beds or twin beds. there is also a bunk room for additional children for families that shares the bathroom when in use. On the first floor there are two superb bedrooms with lots of space and views over the Calabourdanne river or towards Belvedere. The main floor leading to the living room is on the second floor, and is truly spectacular, with large double height windows letting in the afternoon sunlight. The fireplace creates a focal point for the room, and the ensemble has a large terrace offering privileged views of the snow front. Dining at Hip Hideouts is a special affair, and Chalet Shar-Pei offers diners a beautiful view of the mountains during meals from large windows above the dining table. Returning to the lowest level, you will find a private spa, a swimming pool with a counter-current system and a Moroccan hammam. It is also possible to enjoy massages by the pool or in the privacy of your room.

FACTS

Prices from: upon request
Sleeps: 4 - 8 Guests
4 bedrooms

SERVICES INCLUDED

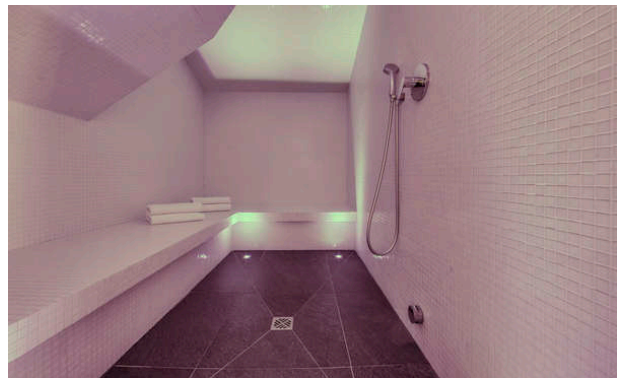
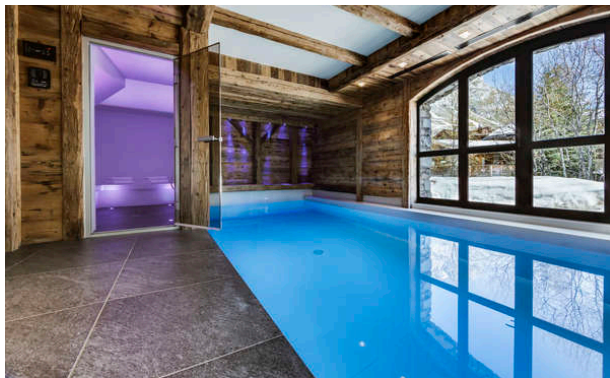
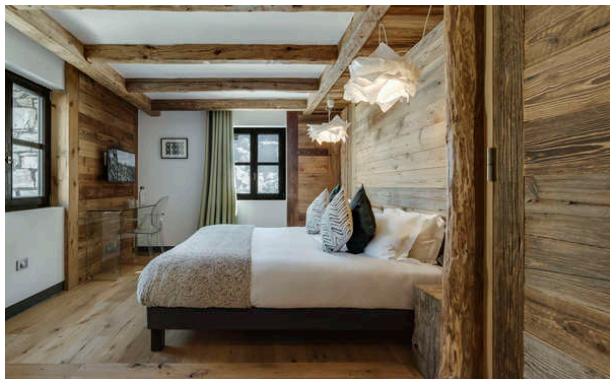
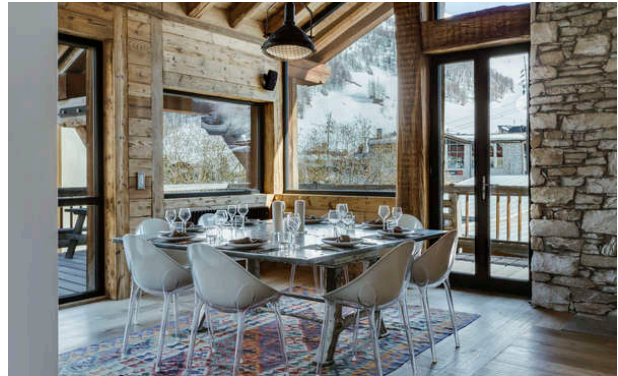
Services of private Chef and butler
Concierge service
Daily Cleaning
In-resort transfer

DISTANCES

Airport: Geneva, 3 hours by car

PROPERTY FEATURES

CHALET-SHAR-PEI , VAL D ISERE



CHALET-SHAR-PEI , VAL D ISERE

